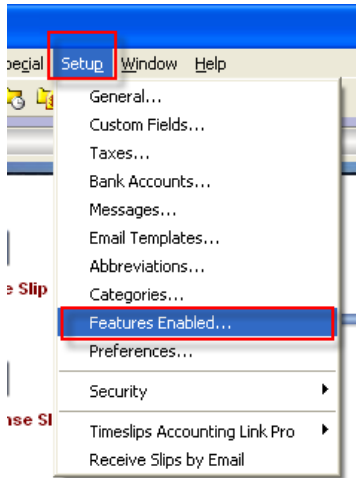
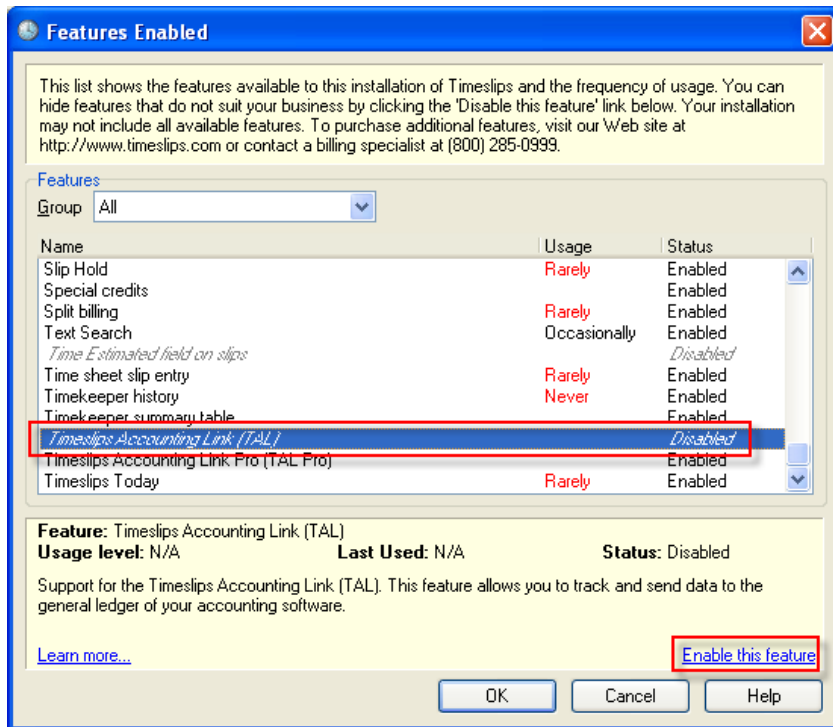


Setup

Features Enabled:



To enable or disable a Timeslips feature, go to Setup, Features Enabled. This is a single-user function. All other users must exit Timeslips before you begin.



Timeslips features are listed alphabetically. Scroll down the list until you find the feature you want to enable or disable. If the feature is disabled, you will see an option at the bottom of the screen to "Enable this feature". Click on that feature to make the feature available on the Timeslips menu. Check your security settings if you need to restrict access to the new feature that was enabled.